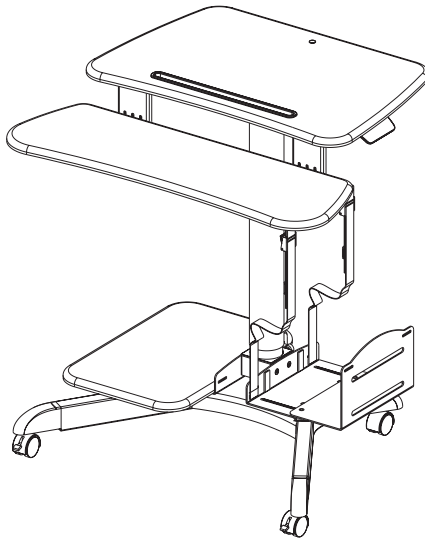




---

## Black 24" Mobile Computer Workstation

### Instruction Manual



**SKU: CART-PC02HB**



Scan the QR code with your mobile device or follow the link for helpful videos and specifications related to this product.

<https://vivo-us.com/products/cart-pc02hb>

---

GET IN TOUCH | Monday-Friday from 7:00am-7:00pm CST



help@vivo-us.com



www.vivo-us.com  
*Chat live with an agent!*



309-278-5303

# **WARNING!**

If you do not understand these directions, or if you have any doubts about the safety of the installation, please call a qualified technician. Check carefully to make sure there are no missing or defective parts. Improper installation may cause damage or serious injury. Do not use this product for any purpose that is not explicitly specified in this manual. Do not exceed weight capacity. We cannot be liable for damage or injury caused by improper mounting, incorrect assembly or inappropriate use.

## **TIPOVER WARNING**

SERIOUS OR FATAL CRUSHING INJURIES CAN OCCUR FROM TIPOVER. TO HELP PREVENT TIPOVER:

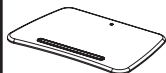
- NEVER ALLOW CHILDREN TO CLIMB, STAND, HANG, OR PLAY ON ANY PART OF CART.
- USE TIPOVER RESTRAINT OR ANCHOR CART TO WALL

**USE OF TIPOVER RESTRAINTS MAY ONLY REDUCE, BUT NOT ELIMINATE RISK OF TIPOVER.**

## **WARNING: CHOKING HAZARD**

SMALL PARTS - NOT FOR CHILDREN UNDER 3 YEARS. ADULT SUPERVISION IS REQUIRED.

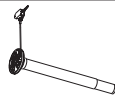
## PACKAGE CONTENTS



**A (x1)**  
Desktop



**B (x1)**  
Base



**C (x1)**  
Pole with  
Handle



**D (x1)**  
Keyboard  
Tray



**E (x1)**  
Printer Shelf



**F (x2)**  
Caster



**G (x2)**  
Locking  
Caster



**H (x1)**  
Lower Shelf  
Bracket



**I (x1)**  
CPU Holder  
Mount



**J (x1)**  
CPU Holder



**K (x2)**  
Keyboard  
Tray Bracket



**L (x4)**  
Adhesive Pad



**M (x2)**  
Cable Clip



**S-A (x3)**  
M6x12mm Screw



**S-B (x4)**  
M6x16mm Screw



**S-C (x14)**  
M6x12mm Screw



**S-D (x4)**  
M6x8mm Screw



**T-A (x1)**  
4mm Allen Wrench



**T-B (x1)**  
5mm Allen Wrench



**T-C (x1)**  
Wrench

## TOOLS NEEDED



**Phillips  
Screwdriver**

## DO NOT EXCEED WEIGHT CAPACITY.

Failure to do so may result in serious injury.



**22 lbs  
(10 kg)**

**Per Tray**



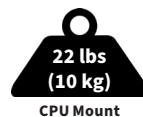
**17.5 lbs  
(8 kg)**

**Worksurface**



**4.4 lbs  
(2 kg)**

**Keyboard  
Tray**



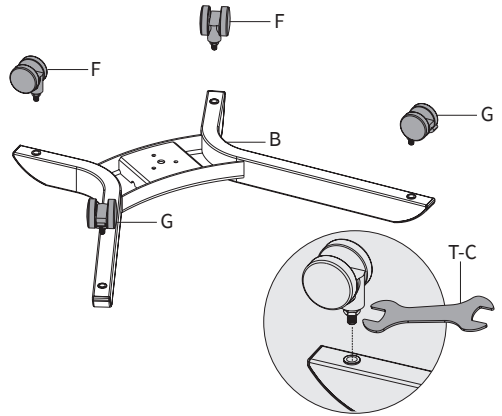
**22 lbs  
(10 kg)**

**CPU Mount**

# ASSEMBLY STEPS

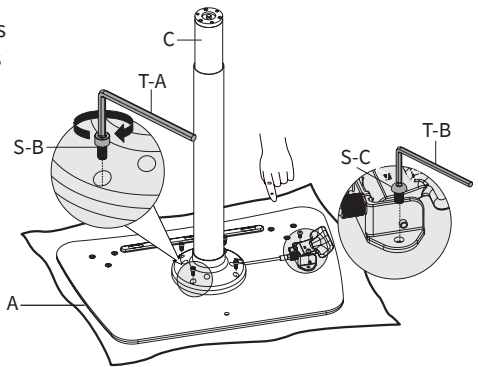
## STEP 1

Screw Casters (**F, G**) into Base (**B**). Adjust Casters (**F, G**) to sit level on the floor if needed, then tighten the nut on each stem against Base (**B**) using Wrench (**T-C**).



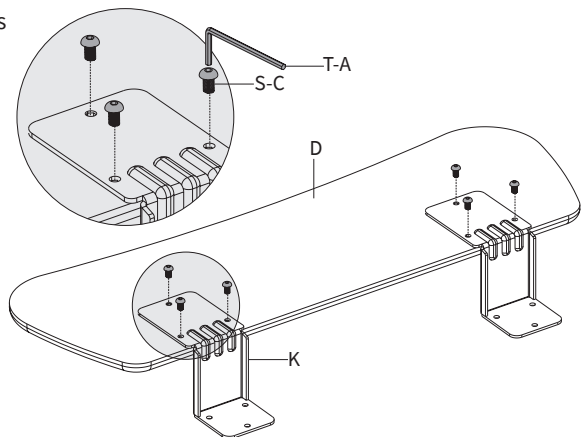
## STEP 2

Assemble the Pole With Handle (**C**) to Desktop (**A**) using M6x16mm Screws (**S-B**) for the pole and M6x12mm Screws (**S-C**) for the handle. Tighten the screws with Allen Wrenches (**T-A, T-B**).



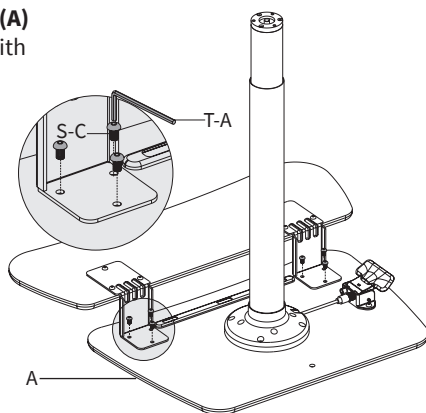
## STEP 3

Assemble Keyboard Tray Brackets (**K**) to Keyboard Tray (**D**) using M6x12mm Screws (**S-C**) and tighten with 4mm Allen Wrench (**T-A**).



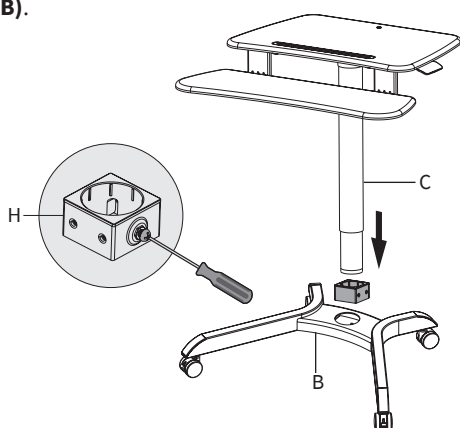
## STEP 4

Attach assembled keyboard tray to Desktop (**A**) using M6x12mm Screws (**S-C**) and tighten with 4mm Allen Wrench (**T-A**).



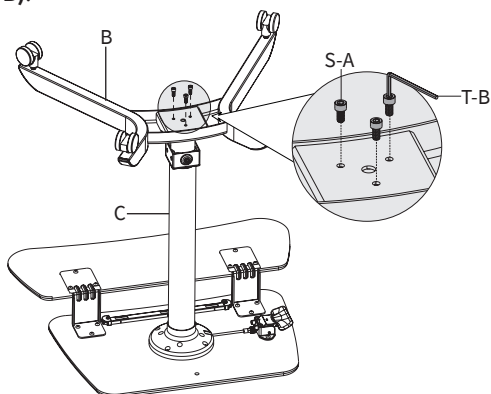
## STEP 5

Loosen the screw on Lower Shelf Bracket (**H**) using a Phillips screwdriver. Slide the bracket onto the bottom of Pole with Handle (**C**), then place the pole into Base (**B**).



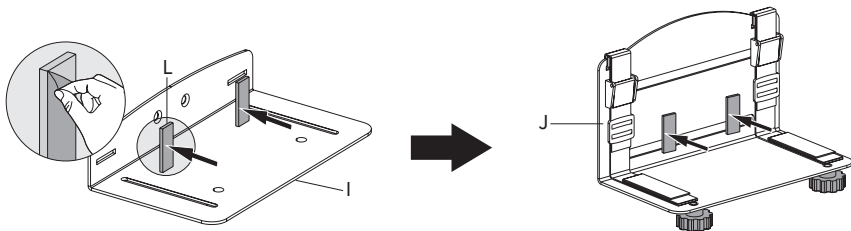
## STEP 6

Secure Base (**B**) to Pole with Handle (**C**) using M6x12mm Screws (**S-A**) and tighten with 5mm Allen Wrench (**T-B**).



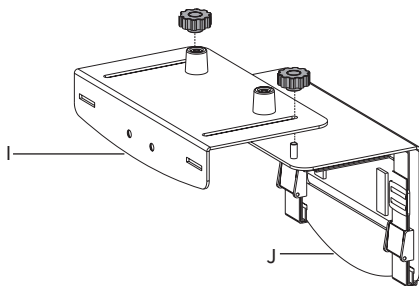
## STEP 7

Peel backing from Adhesive Pads (**L**) and apply pads to CPU Holder Mount (**I**) and CPU Holder (**J**). Remove knobs from CPU Holder (**J**).



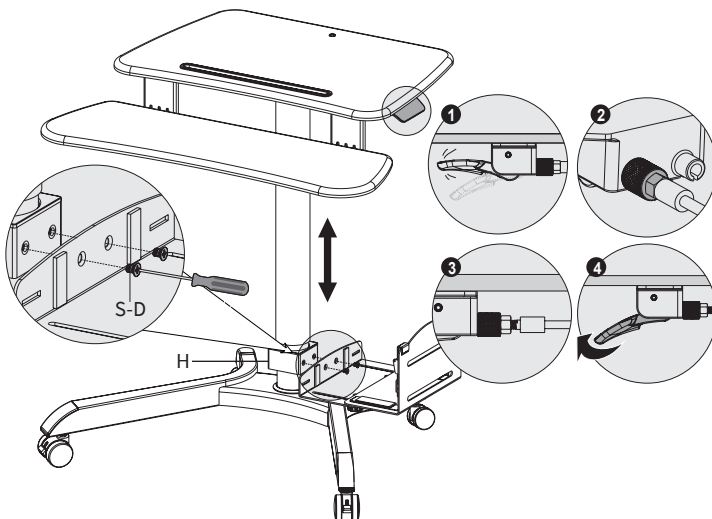
## STEP 8

Assemble CPU Holder (**J**) and CPU Holder Mount (**I**) using previously removed knobs.



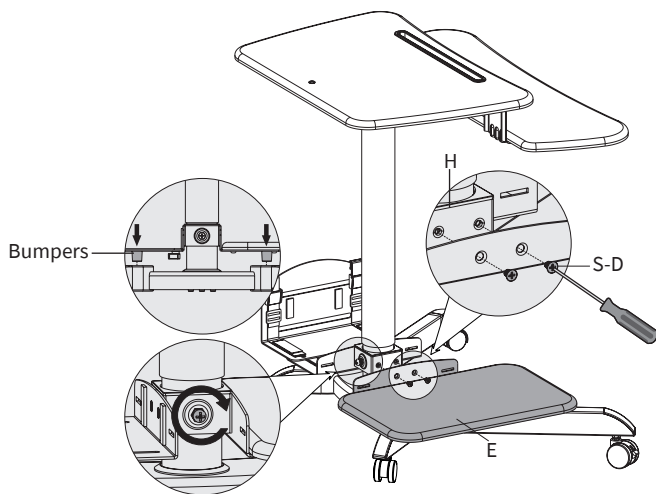
## STEP 9

Attach assembled CPU holder to left or right side of Lower Shelf Bracket (**H**) using M6x8mm Screws (**S-D**) with a Phillips screwdriver. If needed, adjust the handle by turning the knob on the back of the handle as shown. The handle should have a firm feeling with little or no slop.



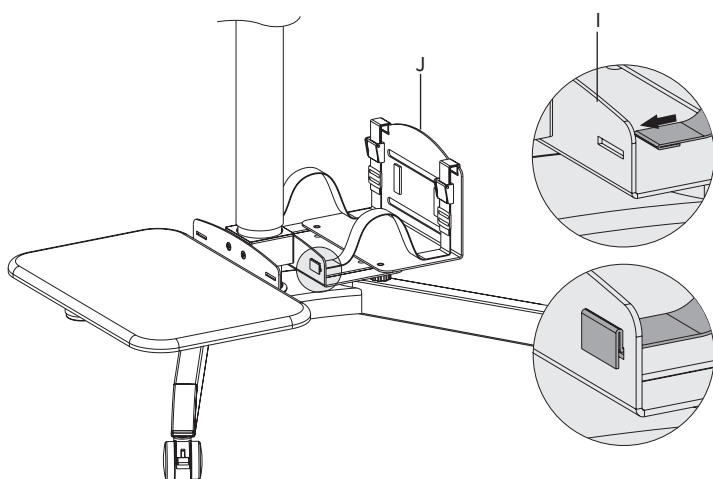
## STEP 10

Attach Printer Shelf (**E**) to Lower Shelf Bracket (**H**) opposite from the CPU holder using M6x8mm Screws (**S-D**) with a Phillips screwdriver. Slide the CPU holder and shelf assembly down so the bumpers are resting on the base, and tighten the screw on Lower Shelf Bracket (**H**) using a Phillips screwdriver.



## STEP 11

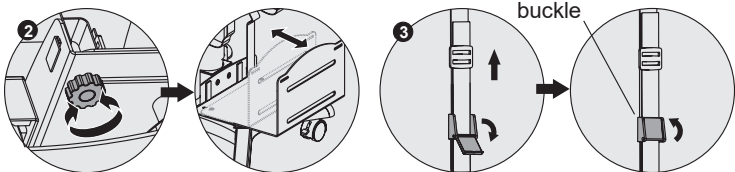
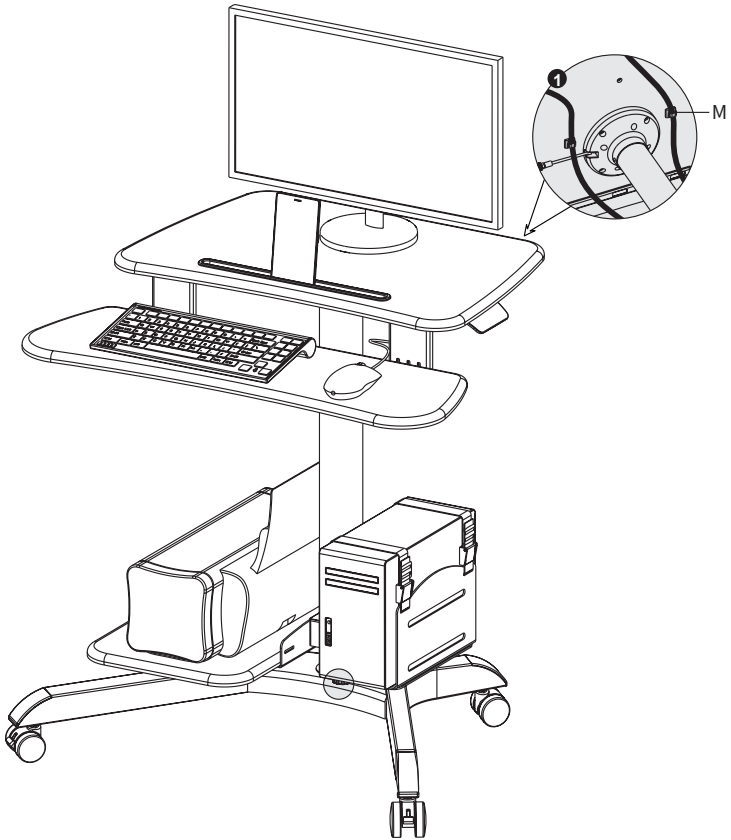
Thread the straps of the CPU Holder (**J**) through slots on CPU Holder Mount (**I**) and turn ends of straps to form a "T", locking the straps into the slots.



## STEP 12

Place monitor, keyboard and other items onto desk. Apply Cable Clips (**M**) where desired to manage wires from keyboard and mouse. Loosen knobs on CPU holder, adjust holder width to fit CPU tower, then tighten. Unlock buckles on straps and extend straps. Place CPU tower in holder, pull straps tight around CPU tower, then lock the buckles.

**NOTE:** To prevent movement, press levers on the locking casters down. Pull levers up to allow movement.





Open **Monday - Friday 7:00am - 7:00pm** CST,  
our dedicated support team can offer immediate assistance with rapid response times. If any parts are received damaged or defective, please contact us. We are happy to replace parts to ensure you have a fully functioning product.



309-278-5303

**AVG. RESOLUTION TIME** (*within office hrs*): **5M 4S**



[www.vivo-us.com](http://www.vivo-us.com)  
*Chat live with an agent!*

**AVG. RESOLUTION TIME** (*within office hrs*): **< 15 M**



[help@vivo-us.com](mailto:help@vivo-us.com)

**AVG. RESPONSE TIME** (*within office hrs*): **1HR 8M**

- 23% within < 15m
- 38% within < 30m
- 61% within < 1hr
- 83% within < 2hr
- 92% within < 3hr